



L A V E R D E
NEW CAPITAL

The story is now yours to live





OUR STORY

This is an inspiring story of a breakthrough vision, steeped in unmatched quality, timeless architecture and a passion for luxury living, envisioned to bring families closer in one-of-a-kind verdant settings.

This is a unique call to experience green and safe investment where every chapter in life is artfully balanced by nature to create cherished moments, measured by family laughter and wellbeing to ensure your investment value is effortlessly doubled.

La Verde Developments introduces captivating chapters of beauty and luxuries at your doorstep to provide you with peace and enjoyment in equal measure. A true testament to integrated contemporary living, set to forever change the way communities live, work, shop and enjoy.

THE STORY IS NOW YOURS TO LIVE



ABOUT LA VERDE DEVELOPMENT

Established in 2017 with luxury integrated living at its heart, La Verde Development is strongly emerging as a leading real estate company putting quality, ceaseless innovation and community at the forefront of all its operations. With an eye on excellence and a dedication to exceed every expectation, La Verde Development introduces a unique outlook on contemporary, mixed-use residential living to provide an attractive melange of timeless architecture, sustainable landscaping and commercial excellence, offering green safe investment in strategic locations like Cairo's New Administrative Capital





Our Vision

To become the leading real estate developer of choice, renowned for its credibility and uncompromising quality standards while setting ourselves as the best investment partner, guaranteeing increasing market value, as well as enriching the overall value of our communities life.

Our Mission

To set the benchmark in integrated luxury living by raising the bar in the real estate industry through the provision of quality breathing spaces that put timeless architecture, breathtaking nature, leisure, health, education and top-class retail luxuries at its heart.





Our Values

EXCEPTIONAL QUALITY

Quality is an integral part of our DNA and the guiding catalyst driving our journey towards success. That's why we are constantly committed to offering the highest in quality and safety standards through premium spaces and value-added products that take integrated living to new heights

SUSTAINABILITY

At La Verde, the future is green. Therefore, we put sustainability at the heart of our business, not only preserving the environment in which we operate, but also building communities according to green global standards, allowing people to connect with nature while benefiting from natural resources in the safest and most efficient way.

INTEGRITY

We hold ourselves up to the highest standards of integrity by dealing with our clients and stake holders with full honesty and transparency at all times. We always focus on doing the right thing by applying a strict ethical business conduct and utmost professionalism, fostering a culture of accountability and trust.

COMMUNITY

We put the wellbeing of our community at the forefront of all our operations. Internally, we care about our employees as our growing community and ensure that they collaborate to thrive while always feeling appreciated. Externally, we build value to enrich the lives of our community guaranteeing a hassle-free living experience that allows them to grow and connect

INNOVATION

We are constantly innovating in our offerings as well as our way of thinking to introduce quality products that guarantee the highest return on investment.





Full of Life

Open your eyes on a green lifestyle where every element has been uniquely designed in harmony with nature to welcome beauty and sunlight into your home.

Admire the architectural authenticity of the Mediterranean, unfolding shaded courtyards and sunny patios right before you, so you can simply unwind or connect with loved ones in grand settings, reminiscent of Andalusia's golden days.

Experience integrated living at its best, inspired by La Roca Village in Spain where every dream becomes a waking reality, inviting you to live, work, shop and enjoy with an exclusive community, right in the heart of Cairo's New Administrative Capital.

La Verde offers you green, safe investment and treasured moments of luxury in one-of-a-kind-settings.



IBRAHIM LASHEEN

Chairman

We are looking for sustainability by making fair profits and maintaining the trust relationship with our clients “To be the first choice of your clients, you have to pay attention to each detail, Our clients are always on the top of our priority list, this how we achieved success during the last year”

“We are looking forward to building urban and touristic communities all over Egypt to spread our vision of creating (Verde communities) green communities and restoring the majesty of classical architecture”



NAGLAA TAHOON

Vice Chairman

Our motto in La Verde” Build a home for every client not only residential units”

“Our continued pursuit is to reach excellence; we are striving to offer civilized urban communities that respect privacy in the first place! We implement the latest technologies in managing our projects to guarantee the sustainability”

“Our clients are our success partners; the credibility is the core of all our sales transactions in the New Capital city. 50% of La Verde New Capital sold out in the first year which is a very satisfying result”



ALAA TAHOON

Board Member & General Manager

We select attentively the calipers, and I supervise by myself on hiring process specially selecting the engineers and the project managers.
“We empower the creative young youth by training and up-skilling them to take the responsibility of leadership positions in La Verde”



SALAH ELSHARKAWY

Board Member & Head Of
The Engineering Management Dep.

“We were the first to build residential communities inspired by the Roman and Andalusian classical architecture in R8; that architecture style became more authentic by time passing”
“The engineering planning and the architectural design is carried out depending on scientific proportion with taking into consideration the Egyptian climate.
We selected an architectural design that prioritizes privacy; provide shade to reduce the high temperature in summer, and good ventilation for low-cost operational capacities”

ABOUT LA VERDE NEW CAPITAL

Rolling out on 35 acres of green land, La Verde crowns a strategic location in R8, straight in the heart of Cairo's New Administrative Capital and alongside its 35 km landmark; the Green River. Boasting a prime location, encircled by an 8 km central park and flowing water features from every side, La Verde New Capital is a secure gated destination, dedicating 80% of its total land area to green breathing spaces, as well as safe road networks where construction only represents 19.5%. Designed with its community's wellbeing in mind, every component of La Verde New Capital is seamlessly planned to enrich homeowners' lives; from timeless two way Mediterranean architecture, communal spots with impressive marble features and roof-top pools to vast terraces and tranquil flowing lakes, guaranteeing equal views for all homeowners alike. With an eye for excellence, round-the-clock security and a passion to bring families closer, La Verde New Capital takes integrated living to a whole new level by catering to all of its residents' needs under one roof, in its lively La Roca Village. Home to a state-of-the-art commercial mall, a cutting-edge medical center, a technologically advanced administrative building, in addition to a social club for recreation, a top-class nursery for quality education and bike trails for carefree mobility, La Verde New Capital promises the best in class luxury and beyond





THE STORY IS NOW YOURS TO LIVE

STRATEGIC LOCATION

Convenient Proximity For a hassle-free life

La Verde New Capital is seamlessly designed to put your life at close proximity to all of Cairo's leading institutions and major attractions, as well as Sokhna's glistening sea via the Sokhna Highway.





INSPIRED ARCHITECTURE

A Contemporary Statement of Mediterranean Elegance

La Verde New Capital aims to create a peaceful residential space which complements the overall serenity and recreation corresponding in the master-plan. Following an innovative interpretation of a traditional Spanish Catalan house, your home is a sanctuary of calm characterized by a two-way residential approach, split in two facades facing north to provide expansive space and year-round light, as well as seasonal quarters for day-long relaxation or entertainment. Boasting grand columns, half round arches and vast windows that open onto garden views, and a shimmering pool, La Verde

New Capital offers you an exclusive opportunity to unwind in a breezy terrace or connect with loved ones on your private roof-top under a blanket of stars.







MASTER PLAN

A Multi-sensory Experience To Call home

Master-planned with residents' convenience in mind, La Verde New Capital brings to fruition an integrated vision of Mediterranean elegance, granting all residents direct access to equal views and top-class amenities by mixing fully functional components such as living, education, health, recreation and nature in one aesthetically appealing plan. Expertly conceived in collaboration with Space Consultants, renowned Engineer Salah El Sharkawy envisioned a sustainable community where solar energy and uninterrupted greenery surrounds homeowners in every direction while culture, leisure and activities thrive in dedicated communal spots. By putting accessibility at the heart of La Verde New Capital's vision, the development not only provides carefree mobility solutions through safe and wide roads, but also boasts verdant pedestrian pathways, bike trails and a running track, perfected by tranquil seatings, roof-top pools and artificial lakes. Deploying the highest international standards of quality and safety, La Verde New Capital enjoys independent security gates, as well as a dedicated security team on alert 24/7 to ensure a calm life. Boasting a variety of housing solutions, spanning elegantly appointed apartments and apartment duplexes, spacious penthouses, as well as luxurious stand-alone villas, La Verde New Capital presents a unique blend of spaces- ranging from 135 sqm to 245 sqm to cater to varied contemporary tastes, as well as every eclectic lifestyle. All units boast two spacious facades, directly facing views and sunlight to evoke an airy breeze while enjoying direct access to private elevators and designated parking spots. Units also open onto common gardens and flowing landscapes , guaranteeing peace of mind for all homeowners alike.



LAPUERTA MALL

A Colorful Array of Retail luxuries at your door

La Puerta Mall paves the way for a lively pedestrian experience, brought to life by a multitude of retail luxuries, spanning top-class brands and luxury shopping experiences on par with global cities around the world. Lined by world-class cafés and quality restaurants, as well as green open spaces for reflection and social interaction, La Puerta Mall is a distinctive commercial hub, boasting points of attraction paths in every direction to become Cairo New Capital's favorite hangout.

Inspired by La Roca Village's Modernist style, the urban character of the zone has been expertly designed to accommodate shopping promenades and green squares with wooden pergolas and lakes to create walkable experiences around every corner for families to connect and enjoy in one-of-a-kind settings surrounded by the development's uniform layout. streets.





GALLERY



La Verde Developments was the first Real Estate developer to invest in R8, and the first company to start in the construction after having the ministerial permission, and since our mission is to maintain credibility, we strive to be the first to deliver the units.





THE STORY IS NOW YOURS TO LIVE





THE STORY IS NOW YOURS TO LIVE





THE STORY IS NOW YOURS TO LIVE





THE STORY IS NOW YOURS TO LIVE





THE STORY IS NOW YOURS TO LIVE





THE STORY IS NOW YOURS TO LIVE





THE STORY IS NOW YOURS TO LIVE





THE STORY IS NOW YOURS TO LIVE

ADMINISTRATIVE OFFICES

Cutting-edge Working Spaces for Every Business

Boasting a technologically advanced nature, as well as inspiring settings to accelerate productivity, La Verde New Cairo introduces a variety of administrative office spaces, catering to varied business needs. Strategically nestled in a prime location, crowning the entrance of the project while enjoying direct access to top-class facilities and dining venues at La Verde Village Mall, La Verde's Administrative offices are the place to flawlessly execute at work and engage with forward-thinking minds in a lively ambiance.





CLUB HOUSE

Memorable Encounters Inspiring Life

La Verde New Capital boasts an exclusive Club House fostering social interaction between its community's members while guaranteeing unforgettable times. Boasting an inviting contemporary feel with breathtaking views over green vistas and a captivating horizon, La Verde's Club House provides the perfect daily escape for those wishing to hang out, dine or simply reflect while enjoying impeccable service.





THE STORY IS NOW YOURS TO LIVE

NURSERY AND KIDS AREA

Quality Education & Playtime Minutes Away From Home

At La Verde New Capital , families' peace of mind comes first. Therefore, the development brings quality nursery education to every door, ensuring your kids learn in safe and inspiring settings minutes away from home. To provide a balanced lifestyle where parents don't need to worry about a thing, La Verde has been carefully designed to surround your children with safe, green parks and spacious play areas to keep them entertained year-round.





HEALTH CARE

A State-of-the-art Medical Center For A Worry-Free Life

Set to provide 24/7 medical excellence and cutting-edge healthcare services, La Verde Medical Center is fully equipped with the latest technology, quality polyclinics and an attentive team of professional doctors to guarantee a worry-free life for you and your family — just a walking distance from home!



SPORTS FACILITIES

Guaranteed Wellbeing For Every Lifestyle

Every aspect of La Verde has been carefully designed with the wellbeing of its community in mind. Encouraging activity and uninterrupted movement in safe settings, La Verde offers state-of-the-art tennis and squash courts, shimmering pools and a running track, as well as breathing pedestrian paths and bicycle lanes, ensuring a healthy lifestyle for all.





THE STORY IS NOW YOURS TO LIVE

A
TYPE
APARTMENTS



Ground Floor-G01

NO	Location	Dimensions
1	Reception 1	4.45m x 4.40m
2	Reception 2	5.60m x 4.75m
3	Kitchen	3.50m x 2.80m
4	Lobby	2.75m x 1.25m
5	Bathroom	2.40m x 2.25m
6	Bedroom	5.00m x 4.55m
7	Dressing	3.20m x 1.70m
8	Master Bathroom	2.40m x 1.95m
9	Master Bedroom	5.25m x 3.80m
10	Terrace	4.25m x 1.60m
11	Terrace	4.65m x 1.60m

Total Area 155m2
+ Garden 65m2



Ground Floor-G02

NO	Location	Dimensions
1	Reception	6.70m x 4.40m
2	Kitchen	4.10m x 2.80m
3	Corridor	3.70m x 1.25m
4	Bathroom	2.70m x 1.95m
5	Lobby	2.25m x 1.05m
6	Master Bathroom	2.25m x 1.65m
7	Master Bedroom	4.30m x 3.80m
8	Bedroom	4.25m x 4.20m
9	Bedroom	4.85m x 3.75m
10	Terrace	7.65m x 2.00m

Total Area 165m2
+ Garden 65m2



APARTMENTS

Building A
Duplex



Ground floor
G03+103

Total Area 130m2 +140m2+
Garden 45m2

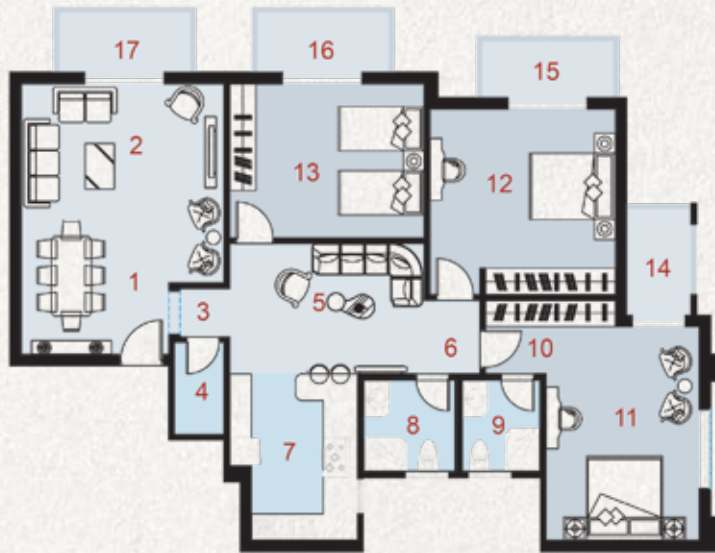
NO	Location	Dimensions	NO	Location	Dimensions
1	Reception	6.50m x 4.35m	13	Entrance	1.85m x 1.40m
2	Guest toilet	2.20m x 1.05m	14	Living room	4.25m x 3.25m
3	Stairs	3.45m x 2.80m	15	Bedroom	4.35m x 4.20m
4	Toilet	2.90m x 1.85m	16	Terrace	3.20m x 1.15m
5	Corridor	1.80m x 1.25m	17	Lobby	1.80m x 1.25m
6	Bedroom	4.65m x 3.85m	18	Bathroom	3.75m x 1.85m
7	Kitchen	4.40m x 3.40m	19	Master Bedroom	4.40m x 3.75m
8	Lobby	2.20m x 0.95m	20	Dressing	2.60m x 2.20m
9	Maids room	2.20m x 2.10m	21	Master Bathroom	2.75m x 2.60m
10	Maids toilet	1.95m x 1.50m	22	Terrace	2.40m x 2.30m
11	Terrace	2.20m x 2.40m	23	Bedroom	4.80m x 3.80m
12	Terrace	8.60m x 2.15m			



Ground floor
G04+104

Total Area 145m2 +135m2+
Garden 45m2

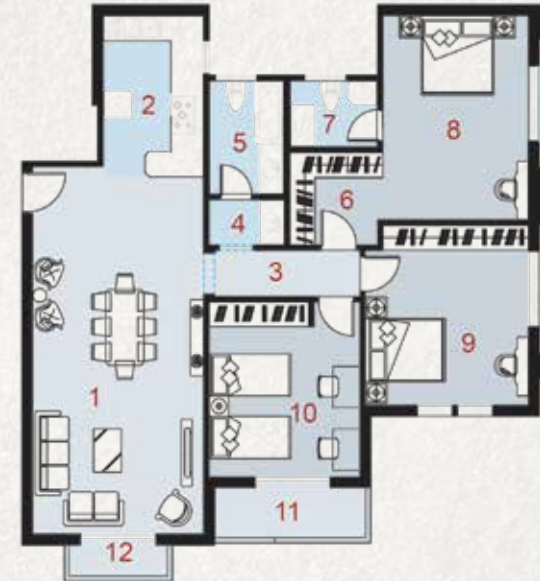
NO	Location	Dimensions	NO	Location	Dimensions
1	Reception	5.95m x 4.40m	13	Living room	4.45m x 3.50m
2	Guest toilet	2.80m x 1.05m	14	Bedroom	4.80m x 4.60m
3	Stairs	2.95m x 2.80m	15	Terrace	2.60m x 0.90m
4	Toilet	2.80m x 2.10m	16	Lobby	1.90m x 1.25m
5	Lobby	1.90m x 1.25m	17	Bathroom	3.30m x 2.10m
6	Bedroom	4.55m x 3.85m	18	Master Bedroom	4.40m x 3.80m
7	Kitchen	4.40m x 3.30m	19	Dressing	2.20m x 2.10m
8	Lobby	2.10m x 0.95m	20	Master Bathroom	2.75m x 2.20m
9	Maids room	2.40m x 2.20m	21	Terrace	2.40m x 1.75m
10	Maids toilet	2.10m x 1.50m	22	Bedroom	5.10m x 3.95m
11	Terrace	2.60m x 2.20m	23	Terrace	3.75m x 1.35m
12	Terrace	2.15m x 8.60m			



First Floor-101

NO	Location	Dimensions	NO	Location	Dimensions
1	Reception 1	3.75m x 1.70m	13	Bedroom	4.55m x 4.25m
2	Reception 2	5.30m x 4.90m	14	Terrace	2.65m x 1.60m
3	Lobby	1.20m x 1.20m	15	Terrace	3.20m x 1.40m
4	Toilet	2.30m x 1.25m	16	Terrace	3.20m x 1.60m
5	Living	4.55m x 3.05m	17	Terrace	3.20m x 1.60m
6	Lobby	1.80m x 1.30m			
7	Kitchen	3.90m x 3.05m			
8	Bathroom	2.30m x 2.25m			
9	Master Bathroom	2.30m x 1.95m			
10	Dressing	3.25m x 1.80m			
11	Master Bedroom	5.00m x 3.80m			
12	Bedroom	4.55m x 4.50m			

Total Area 190m2



First Floor-102

NO	Location	Dimensions
1	Reception	9.05m x 4.40m
2	Kitchen	3.85m x 2.75m
3	Corridor	3.70m x 1.25m
4	Wash basin	1.95m x 1.20m
5	Bathroom	2.90m x 1.95m
6	Dressing	2.35m x 2.30m
7	Master Bathroom	2.25m x 1.80m
8	Master Bedroom	5.10m x 3.85m
9	Bedroom	4.65m x 4.20m
10	Bedroom	4.50m x 3.75m
11	Terrace	3.75m x 1.35m
12	Terrace	2.60m x 0.90m

Total Area 155m2



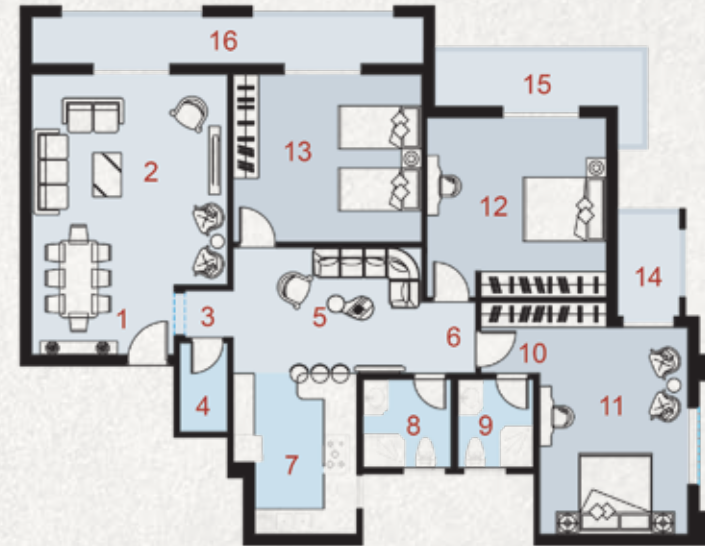
APARTMENTS



First Floor-104

NO	Location	Dimensions
1	Reception	8.50m x 4.25m
2	Kitchen	3.15m x 2.55m
3	Lobby	1.90m x 1.25m
4	Bathroom	3.35m x 1.95m
5	Master Bedroom	4.40m x 3.90m
6	Dressing	2.20m x 2.20m
7	Master bathroom	2.75m x 2.20m
8	Bedroom	5.10m x 3.95m
9	Terrace	2.40m x 1.55m
10	Terrace	3.75m x 1.35m
11	Terrace	2.60m x 0.90m

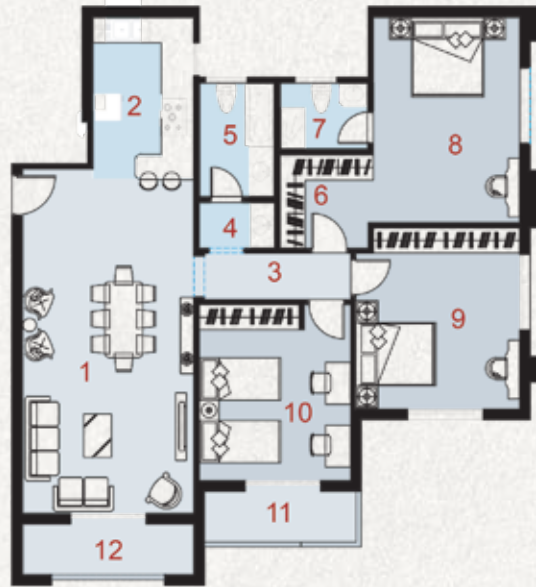
Total Area 135m2



Typical-201-301-401-501-601-701

NO	Location	Dimensions	NO	Location	Dimensions
1	Reception 1	3.75m x 1.80m	13	Bedroom	4.55m x 4.25m
2	Reception 2	5.30m x 4.90m	14	Terrace	2.65m x 1.60m
3	Lobby	1.20m x 1.20m	15	Terrace	5.00m x 1.40m
4	Toilet	2.30m x 1.25m	16	Terrace	9.70m x 1.35m
5	Living	4.55m x 3.05m			
6	Lobby	1.80m x 1.30m			
7	Kitchen	3.90m x 3.05m			
8	Bathroom	2.30m x 2.25m			
9	Master Bathroom	2.30m x 1.95m			
10	Dressing	3.25m x 1.80m			
11	Master Bedroom	5.00m x 3.80m			
12	Bedroom	4.55m x 4.50m			

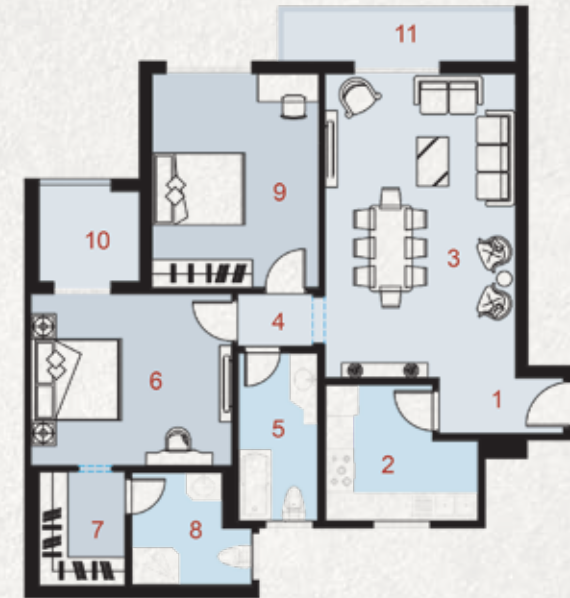
Total Area 208m2



Typical-202-302-402-502-602-702

NO	Location	Dimensions
1	Reception	8.45m x 4.40m
2	Kitchen	4.10m x 2.75m
3	Corridor	3.70m x 1.25m
4	Wash basin	1.95m x 1.20m
5	Bathroom	2.90m x 1.95m
6	Dressing	2.35m x 2.30m
7	Master Bathroom	2.25m x 1.80m
8	Master Bedroom	5.10m x 3.85m
9	Bedroom	4.65m x 4.20m
10	Bedroom	4.50m x 3.75m
11	Terrace	3.75m x 1.35m
12	Terrace	4.60m x 1.35m

Total Area 155m2



Typical-203-303-403-503-603-703

NO	Location	Dimensions
1	Entrance	2.95m x 1.55m
2	Kitchen	3.45m x 3.10m
3	Reception	6.70m x 4.35m
4	Lobby	1.80m x 1.25m
5	Bathroom	3.75m x 1.85m
6	Master Bedroom	4.40m x 3.95m
7	Dressing	2.60m x 2.20m
8	Master Bathroom	2.70m x 2.60m
9	Bedroom	4.85m x 3.85m
10	Terrace	2.40m x 2.20m
11	Terrace	5.25m x 1.15m

Total Area 135m2



APARTMENTS

Building A
Duplex



203+303

Total Area
135m²+135m²

NO	Location	Dimensions	NO	Location	Dimensions
1	Reception	7.85m x 4.30m	13	Bedroom	4.35m x 4.35m
2	Stairs	3.40m x 2.80m	14	Lobby	1.85m x 1.25m
3	Terrace	5.25m x 1.15m	15	Bathroom	3.75m x 1.85m
4	Lobby	2.10m x 1.80m	16	Master Bedroom	4.40m x 3.75m
5	Toilet	2.95m x 1.85m	17	Dressing	2.65m x 2.20m
6	Kitchen	4.40m x 3.95m	18	Master Bathroom	2.75m x 2.65m
7	Lobby	1.80m x 1.05m	19	Terrace	2.40m x 2.35m
8	Maid Room	2.75m x 2.45m	20	Bedroom	4.85m x 3.80m
9	Maid Toilet	2.35m x 1.70m	21	Terrace	5.25m x 1.15m
10	Terrace	2.55m x 2.20m			
11	Bedroom	4.85m x 3.85m			
12	Living	4.35m x 3.25m			



403+503

Total Area
135m²+135m²

NO	Location	Dimensions	NO	Location	Dimensions
1	Reception	7.85m x 4.30m	13	Bedroom	4.35m x 4.35m
2	Stairs	3.40m x 2.80m	14	Lobby	1.85m x 1.25m
3	Terrace	5.25m x 1.15m	15	Bathroom	3.75m x 1.85m
4	Lobby	2.10m x 1.80m	16	Master Bedroom	4.40m x 3.75m
5	Toilet	2.95m x 1.85m	17	Dressing	2.65m x 2.20m
6	Kitchen	4.40m x 3.95m	18	Master Bathroom	2.75m x 2.65m
7	Lobby	1.80m x 1.05m	19	Terrace	2.40m x 2.35m
8	Maid Room	2.75m x 2.45m	20	Bedroom	4.85m x 3.80m
9	Maid Toilet	2.35m x 1.70m	21	Terrace	5.25m x 1.15m
10	Terrace	2.55m x 2.20m			
11	Bedroom	4.85m x 3.85m			
12	Living	4.35m x 3.25m			



Building A
Duplex



603+703
Total Area
135m²+135m²

NO	Location	Dimensions	NO	Location	Dimensions
1	Reception	7.85m x 4.30m	13	Bedroom	4.35m x 4.35m
2	Stairs	3.40m x 2.80m	14	Lobby	1.85m x 1.25m
3	Terrace	2.60m x 1.15m	15	Bathroom	3.75m x 1.85m
4	Lobby	2.10m x 1.80m	16	Master Bedroom	4.40m x 3.75m
5	Toilet	2.95m x 1.85m	17	Dressing	2.65m x 2.20m
6	Kitchen	4.40m x 3.95m	18	Master Bathroom	2.75m x 2.65m
7	Lobby	1.80m x 1.05m	19	Terrace	2.40m x 2.35m
8	Maid Room	2.75m x 2.45m	20	Bedroom	4.85m x 3.80m
9	Maid Toilet	2.35m x 1.70m	21	Terrace	5.25m x 1.15m
10	Terrace	2.55m x 2.20m			
11	Bedroom	4.85m x 3.85m			
12	Living	4.35m x 3.25m			



Typical-204-304-404-504-604-704

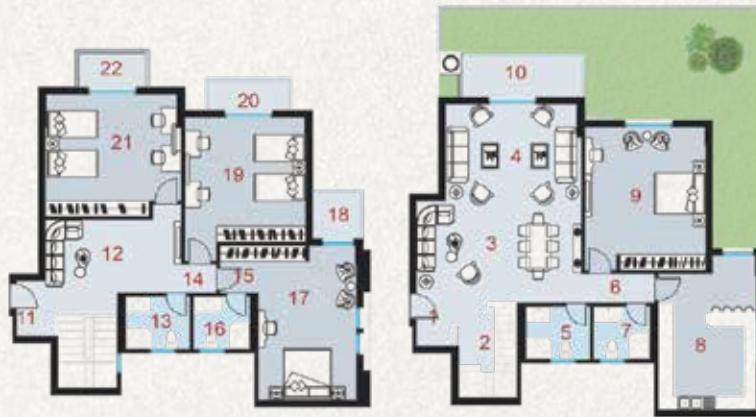
NO	Location	Dimensions
1	Reception	7.95m x 4.40m
2	Kitchen	3.15m x 2.55m
3	Lobby	1.90m x 1.25m
4	Bathroom	3.35m x 1.95m
5	Master Bedroom	4.40m x 3.95m
6	Dressing	2.20m x 2.20m
7	Master bathroom	2.75m x 2.20m
8	Bedroom	5.10m x 3.95m
9	Terrace	2.40m x 1.55m
10	Terrace	3.75m x 1.35m
11	Terrace	4.60m x 1.35m

Total Area 135m²

B
TYPE
APARTMENTS



Building B
Duplex



G01+101

Total Area 155m²+158m²
+ Garden 75m²

NO	Location	Dimensions	NO	Location	Dimensions
1	Entrance	2.00m x 1.70m	13	Bathroom	2.70m x 2.20m
2	Stairs	3.85m x 2.60m	14	Lobby	1.35m x 1.25m
3	Reception 1	6.55m x 3.95m	15	Dressing	3.40m x 1.95m
4	Reception 2	5.45m x 3.90m	16	Master Bathroom	2.35m x 2.20m
5	Bathroom	2.70m x 2.20m	17	Master Bedroom	6.35m x 4.10m
6	Corridor	2.80m x 1.20m	18	Terrace	2.00m x 1.80m
7	Bathroom	2.40m x 2.20m	19	Bedroom	5.75m x 4.90m
8	Kitchen	6.35m x 4.10m	20	Terrace	3.20m x 1.25m
9	Bedroom	5.75m x 4.90m	21	Bedroom	5.35m x 4.95m
10	Terrace	4.80m x 1.70m	22	Terrace	2.80m x 1.45m
11	Entrance	2.60m x 1.60m			
12	Living room	5.35m x 2.80m			



G02

NO	Location	Dimensions
1	Reception	7.70m x 4.15m
2	Kitchen	3.70m x 2.60m
3	Corridor	5.20m x 1.25m
4	Wash basin	2.75m x 1.25m
5	Bathroom	2.75m x 2.70m
6	Bedroom	4.60m x 3.65m
7	Bedroom	3.80m x 3.70m
8	Master Bedroom	6.20m x 4.05m
9	Master Dressing	2.45m x 1.55m
10	Master Bathroom	2.45m x 2.40m
11	Terrace	4.35m x 2.10m

Total Area 180m²
+ Garden 80m²

B

APARTMENTS

Building B
Duplex



G03

NO	Location	Dimensions
1	Reception	7.25m x 4.90m
2	Toilet	2.75m x 2.50m
3	Kitchen	2.75m x 2.45m
4	Corridor	3.65m x 1.25m
5	Bathroom	3.10m x 2.00m
6	Bedroom	4.80m x 3.65m
7	Bedroom	5.50m x 3.95m
8	Lobby	3.40m x 1.35m
9	Master Bathroom	3.30m x 1.90m
10	Master Bedroom	5.25m x 4.60m
11	Terrace	1.80m x 1.75m
12	Terrace	3.75m x 0.90m
13	Terrace	4.80m x 1.70m

Total Area 203m²
+ Garden 60m²



G04

NO	Location	Dimensions
1	Reception	6.65m x 5.00m
2	Terrace	4.55m x 2.10m
3	Toilet	2.70m x 1.40m
4	Kitchen	2.75m x 2.45m
5	Corridor	3.65m x 1.25m
6	Bathroom	2.80m x 2.00m
7	Corridor	3.40m x 1.35m
8	Master Bathroom	3.00m x 1.85m
9	Master Bedroom	5.30m x 4.60m
10	Terrace	1.85m x 1.60m
11	Bedroom	5.45m x 3.95m
12	Bedroom	5.70m x 3.65m

Total Area 200m²
+ Garden 70m²



First Floor-102

NO	Location	Dimensions
1	Reception	9.10m x 4.15m
2	Kitchen	3.70m x 2.60m
3	Corridor	5.15m x 1.25m
4	Washbasin	2.75m x 1.25m
5	Bathroom	2.75m x 2.70m
6	Bedroom	4.60m x 3.65m
7	Bedroom	4.15m x 3.70m
8	Master Bedroom	6.55m x 4.05m
9	Dressing	2.55m x 1.55m
10	Master Bathroom	2.45m x 2.40m
11	Terrace	3.20m x 1.30m
12	Terrace	2.60m x 1.80m

Total Area 170m2



First Floor-103

NO	Location	Dimensions	NO	Location	Dimensions
1	Reception	7.30m x 4.50m	13	Terrace	3.20m x 1.20m
2	Living room	4.85m x 3.30m	14	Bedroom	4.80m x 3.65m
3	Toilet	2.70m x 2.30m	15	Terrace	3.20m x 1.25m
4	Kitchen	2.75m x 2.45m	16	Terrace	2.80m x 1.45m
5	Bedroom	4.85m x 4.05m	17	Terrace	2.80m x 1.45m
6	Corridor	3.65m x 1.25m			
7	Bathroom	3.15m x 2.00m			
8	Lobby	2.50m x 1.30m			
9	Master Bathroom	3.40m x 1.90m			
10	Master Bedroom	5.30m x 4.80m			
11	Terrace	1.80m x 1.75m			
12	Bedroom	5.50m x 3.95m			

Total Area 245m2

B

APARTMENTS

Building B
Duplex



First Floor-104

NO	Location	Dimensions
1	Reception	8.20m x 5.00m
2	Terrace	2.60m x 1.80m
3	Toilet	2.70m x 1.40m
4	Kitchen	2.75m x 2.45m
5	Corridor	3.65m x 1.25m
6	Bathroom	2.80m x 2.00m
7	Corridor.	3.40m x 1.35m
8	Master Bathroom	3.10m x 1.85m
9	Master Bedroom	5.30m x 4.60m
10	Terrace	1.85m x 1.75m
11	Bedroom	5.80m x 3.95m
12	Bedroom	5.70m x 3.65m
13	Terrace	4.05m x 1.30m

Total Area 182m2



Typical-201-301-401-501-601-701

NO	Location	Dimensions
1	Entrance	2.60m x 1.70m
2	Kitchen	3.65m x 2.60m
3	Reception	7.80m x 5.45m
4	Bathroom	2.35m x 2.20m
5	Corridor	3.10m x 1.20m
6	Dressing	2.50m x 2.15m
7	Bedroom	4.90m x 3.85m
8	Bedroom	4.70m x 4.25m
9	Master Room Lobby	2.20m x 1.10m
10	Master Bathroom	2.20m x 1.95m
11	Master Bedroom	4.65m x 4.10m
12	Terrace	5.55m x 2.00m
13	Terrace	4.85m x 0.65m

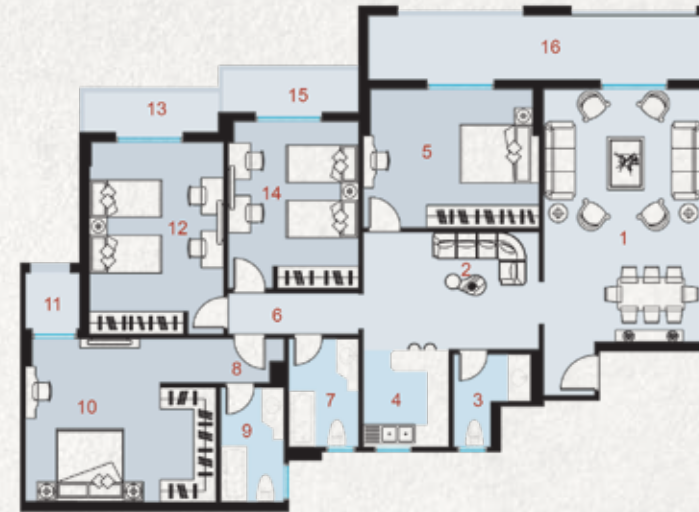
Total Area 175m2



Typical-202-302-402-502-602-702

NO	Location	Dimensions
1	Reception	9.10m x 4.15m
2	Kitchen	3.70m x 2.60m
3	Terrace	4.50m x 1.80m
4	Corridor	5.15m x 1.25m
5	Wash Basin	2.75m x 1.25m
6	Bathroom	2.75m x 2.70m
7	Bedroom	4.60m x 3.65m
8	Terrace	3.80m x 1.30m
9	Bedroom	4.15m x 3.70m
10	Master Bedroom	5.80m x 4.05m
11	Dressing Room	2.45m x 1.55m
12	Master Bathroom	2.45m x 2.40m

Total Area 170m2



Typical-203-303-403-503-603-703

NO	Location	Dimensions	NO	Location	Dimensions
1	Reception	7.30m x 4.50m	13	Terrace	3.80m x 1.20m
2	Living room	4.85m x 3.25m	14	Bedroom	4.80m x 3.65m
3	Toilet	2.70m x 2.30m	15	Terrace	3.90m x 1.25m
4	Kitchen	2.75m x 2.45m	16	Terrace	9.50m x 2.00m
5	Bedroom	4.85m x 4.05m			
6	Corridor	3.65m x 1.25m			
7	Bathroom	3.10m x 2.00m			
8	Lobby	2.95m x 1.35m			
9	Master Bathroom	3.30m x 1.90m			
10	Master Bedroom	5.30m x 4.80m			
11	Terrace	1.80m x 1.75m			
12	Bedroom	5.50m x 3.95m			

Total Area 255m2

B

APARTMENTS

Building B
Duplex



Typical-204-304-404-504-604-704

NO	Location	Dimensions
1	Reception	8.20m x 5.00m
2	Terrace	4.55m x 1.80m
3	Toilet	2.70m x 1.40m
4	Kitchen	2.75m x 2.45m
5	Corridor	3.65m x 1.25m
6	Bathroom	2.80m x 2.00m
7	Corridor	3.40m x 1.35m
8	Master Bathroom	3.10m x 1.85m
9	Master Bedroom	5.30m x 4.60m
10	Terrace	1.85m x 1.75m
11	Bedroom	5.80m x 3.95m
12	Bedroom	5.70m x 3.65m
13	Terrace	4.35m x 1.30m

Total Area 182m²



G01

NO	Location	Dimensions
1	Reception	6.15m x 3.70m
2	Reception	7.00m x 4.05m
3	Living	3.90m x 2.90m
4	Guest toilet	2.30m x 1.45m
5	Kitchen	2.65m x 2.60m
6	Bathroom	2.60m x 1.90m
7	Lobby	1.90m x 1.25m
8	Master bedroom	4.10m x 3.75m
9	Master bathroom	2.50m x 1.65m
10	Dressing	2.50m x 1.65m
11	Terrace	1.85m x 1.75m
12	Bedroom	5.85m x 4.15m
13	Bedroom	4.70m x 3.90m
14	Terrace	5.95m x 1.20m

Total Area 200m2



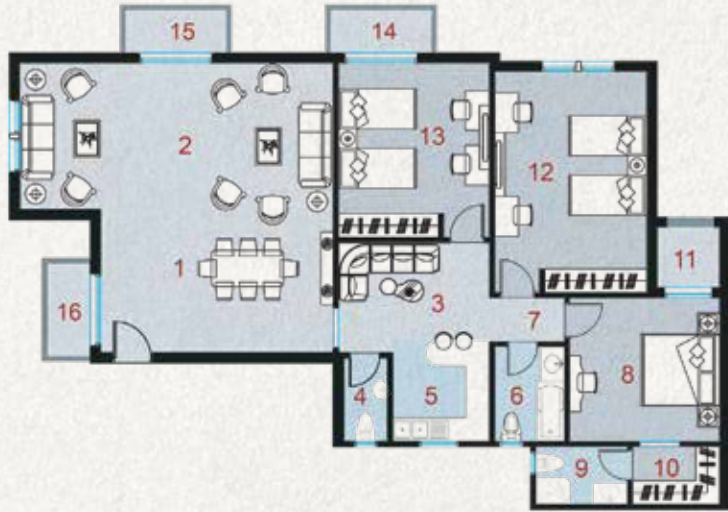
G02

NO	Location	Dimensions
1	Reception	6.35m x 6.15m
2	Living	3.90m x 3.80m
3	Guest toilet	2.70m x 1.45m
4	Kitchen	3.65m x 2.55m
5	Bathroom	3.60m x 1.90m
6	Lobby	1.90m x 1.25m
7	Master Bedroom Lobby	2.25m x 1.00m
8	Master Bedroom	4.10m x 3.95m
9	Dressing	2.25m x 1.65m
10	Master Bathroom	2.50m x 1.65m
11	Terrace	1.85m x 1.40m
12	Bedroom	5.90m x 4.15m
13	Bedroom	3.95m x 3.90m

Total Area 185m2

APARTMENTS

Building B
Duplex



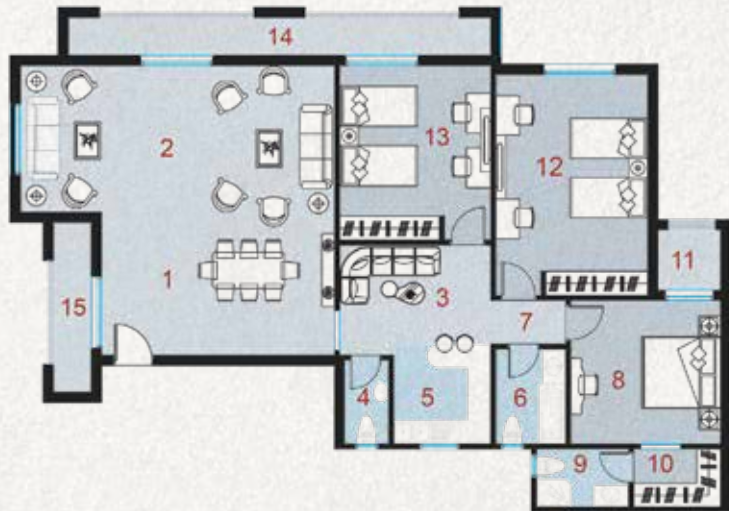
First Floor-101

NO	Location	Dimensions	NO	Location	Dimensions
1	Reception	6.15m x 3.70m	13	Bedroom	4.70m x 3.90m
2	Reception	8.20m x 4.05m	14	Terrace	2.80m x 1.20m
3	Living	3.90m x 2.90m	15	Terrace	2.80m x 1.20m
4	Guest toilet	2.30m x 1.45m	16	Terrace	2.60m x 1.20m
5	Kitchen	2.65m x 2.60m	Total Area 220m2		
6	Bathroom	2.60m x 1.90m			
7	Lobby	1.90m x 1.25m			
8	Master bedroom	4.10m x 3.75m			
9	Master bathroom	2.50m x 1.65m			
10	Dressing	2.50m x 1.65m			
11	Terrace	1.85m x 1.75m			
12	Bedroom	5.85m x 4.15m			



First Floor-102

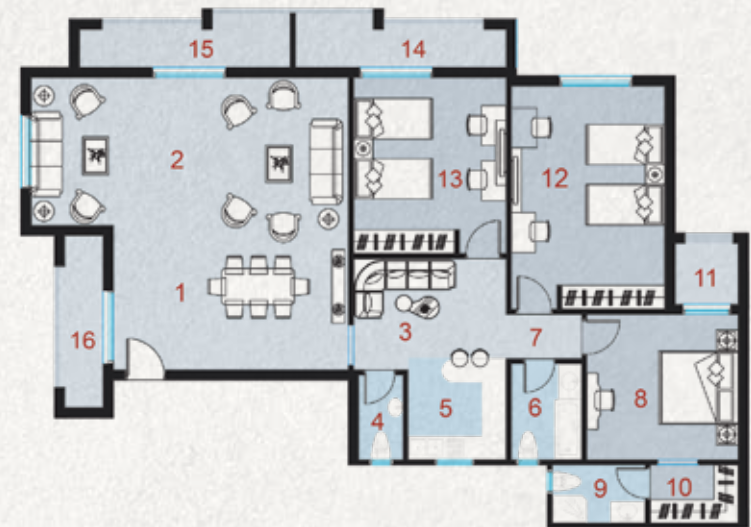
NO	Location	Dimensions	NO	Location	Dimensions
1	Reception	6.35m x 6.15m	13	Bedroom	3.95m x 3.90m
2	Living	3.90m x 3.80m	14	Terrace	2.60m x 1.20m
3	Guest toilet	2.70m x 1.45m	15	Terrace	2.60m x 1.20m
4	Kitchen	3.65m x 2.55m	16	Terrace	2.60m x 1.20m
5	Bathroom	3.60m x 1.90m	Total Area 200m2		
6	Lobby	1.90m x 1.25m			
7	Master Bedroom Lobby	2.25m x 1.00m			
8	Master Bedroom	4.10m x 3.95m			
9	Dressing	2.25m x 1.65m			
10	Master Bathroom	2.50m x 1.65m			
11	Terrace	1.85m x 1.40m			
12	Bedroom	5.90m x 4.15m			



Typical-201-301-601-701

NO	Location	Dimensions
1	Reception	6.15m x 3.70m
2	Reception	8.20m x 4.05m
3	Living	3.90m x 2.90m
4	Guest toilet	2.30m x 1.45m
5	Kitchen	2.65m x 2.60m
6	Bathroom	2.60m x 1.90m
7	Lobby	1.90m x 1.25m
8	Master bedroom	4.10m x 3.75m
9	Master bathroom	2.50m x 1.65m
10	Dressing	2.50m x 1.65m
11	Terrace	1.85m x 1.75m
12	Bedroom	5.85m x 4.15m
13	Bedroom	4.70m x 3.90m
14	Terrace	11.05m x 1.20m
15	Terrace	4.50m x 1.20m

Total Area 230m2



Typical-401-501

NO	Location	Dimensions
1	Reception	6.15m x 3.70m
2	Reception	8.20m x 4.05m
3	Living	3.90m x 2.90m
4	Guest toilet	2.30m x 1.45m
5	Kitchen	2.65m x 2.60m
6	Bathroom	2.60m x 1.90m
7	Lobby	1.90m x 1.25m
8	Master bedroom	4.10m x 3.75m
9	Master bathroom	2.50m x 1.65m
10	Dressing	2.50m x 1.65m
11	Terrace	1.85m x 1.75m
12	Bedroom	5.85m x 4.15m
13	Bedroom	4.70m x 3.90m
14	Terrace	5.55m x 1.45m
15	Terrace	5.55m x 1.45m
16	Terrace	4.50m x 1.20m

Total Area 230m2

APARTMENTS

Building B
Duplex



Typical-202-302-402-502-602-702

NO	Location	Dimensions
1	Reception	6.35m x 6.15m
2	Living	3.90m x 3.80m
3	Guest toilet	2.70m x 1.45m
4	Kitchen	3.65m x 2.55m
5	Bathroom	3.60m x 1.90m
6	Lobby	1.90m x 1.25m
7	Master Bedroom Lobby	2.25m x 1.00m
8	Master Bedroom	4.10m x 3.95m
9	Dressing	2.25m x 1.65m
10	Master Bathroom	2.50m x 1.65m
11	Terrace	1.85m x 1.40m
12	Bedroom	5.90m x 4.15m
13	Bedroom	3.95m x 3.90m
14	Terrace	4.10m x 1.20m
15	Terrace	4.15m x 1.20m
16	Terrace	4.50m x 1.20m

Total Area 210m²



G01

NO	Location	Dimensions
1	Entrance	3.55m x 1.00m
2	Reception 1	6.45m x 3.50m
3	Reception 2	7.30m x 4.70m
4	Bathroom	3.00m x 1.90m
5	Kichen	3.05m x 2.60m
6	Corridor	5.50m x 1.25m
7	Bedroom	5.35m x 3.80m
8	Bedroom	3.95m x 3.95m
9	Master Room	4.55m x 4.10m
10	Master Room Dressing	2.45m x 2.00m
11	Master Bathroom	2.40m x 2.00m

Total Area 195m2



G02

NO	Location	Dimensions
1	Entrance	3.50m x 1.60m
2	Reception	7.00m x 3.85m
3	Bathroom	3.20m x 1.95m
4	kitchen	3.20m x 2.75m
5	Corridor	5.45m x 1.25m
6	Bedroom	5.60m x 3.55m
7	Bedroom	5.35m x 4.00m
8	Master Room	4.55m x 3.95m
9	Master Room Dressing	2.45m x 2.00m
10	Master Bathroom	2.40m x 2.00m

Total Area 165m2

APARTMENTS

Building B
Duplex



First Floor-101

NO	Location	Dimensions
1	Entrance	3.55m x 1.00m
2	Reception 1	6.45m x 3.50m
3	Reception 2	7.30m x 4.70m
4	Bathroom	3.00m x 1.90m
5	Kichen	3.05m x 2.60m
6	Corridor	5.50m x 1.25m
7	Bedroom	5.35m x 3.80m
8	Bedroom	3.95m x 3.95m
9	Master Room	4.55m x 4.10m
10	Master Room Dressing	2.45m x 2.00m
11	Master Bathroom	2.40m x 2.00m
12	Terrace	1.95m x 1.55m
13	Terrace	3.20m x 1.20m
14	Terrace	2.60m x 1.20m
15	Terrace	2.60m x 1.20m
16	Terrace	2.60m x 1.20m

Total Area 220m2



First Floor-102

NO	Location	Dimensions
1	Entrance	3.50m x 1.60m
2	Reception	7.00m x 3.85m
3	Bathroom	3.20m x 1.95m
4	kitchen	3.20m x 2.75m
5	Corridor	5.45m x 1.25m
6	Bedroom	5.60m x 3.55m
7	Bedroom	5.35m x 4.00m
8	Master Room	4.55m x 3.95m
9	Master Room Dressing	2.45m x 2.00m
10	Master Bathroom	2.40m x 2.00m
11	Terrace	1.85m x 1.10m
12	Terrace	2.60m x 1.20m
13	Terrace	2.60m x 1.20m
14	Terrace	2.60m x 1.00m

Total Area 175m2



Typical-201-301-401-501-601-701

NO	Location	Dimensions
1	Entrance	3.55m x 1.00m
2	Reception 1	6.45m x 3.55m
3	Reception 2	7.30m x 4.40m
4	Bathroom	3.00m x 1.80m
5	Kichen	3.05m x 2.60m
6	Corridor	5.50m x 1.25m
7	Bedroom	5.35m x 3.75m
8	Bedroom	5.10m x 3.95m
9	Master Room	4.35m x 4.10m
10	Master Room Dressing	2.45m x 2.00m
11	Master Bathroom	2.40m x 2.00m
12	Terrace	1.85m x 1.45m
13	Terrace	3.75m x 1.20m
14	Terrace	7.95m x 1.20m
15	Terrace	4.85m x 1.20m

Total Area 230m2



Typical-202-302-402-502-602-702

NO	Location	Dimensions
1	Entrance	3.50m x 1.60m
2	Reception	7.00m x 3.85m
3	Bathroom	3.20m x 1.95m
4	kitchen	3.20m x 2.75m
5	Corridor	5.45m x 1.25m
6	Bedroom	5.60m x 3.55m
7	Bedroom	5.35m x 4.00m
8	Master Room	4.55m x 3.95m
9	Master Room Dressing	2.45m x 2.00m
10	Master Bathroom	2.40m x 2.00m
11	Terrace	1.85m x 1.10m
12	Terrace	4.15m x 1.20m
13	Terrace	4.10m x 1.20m
14	Terrace	2.60m x 0.75m

Total Area 185m2

C
—
TYPE
STUDIOS



NO	Location	Dimensions
1	Livingroom	4.90x4.40m
2	Kitchen	3.05x2.25m
3	Bedroom	5.00x4.30m
4	Bathroom	2.85x1.80m
5	Washbasin	1.80x1.15m

Total Area 67 m2

Typical-Studio

D
TYPE
VILLA



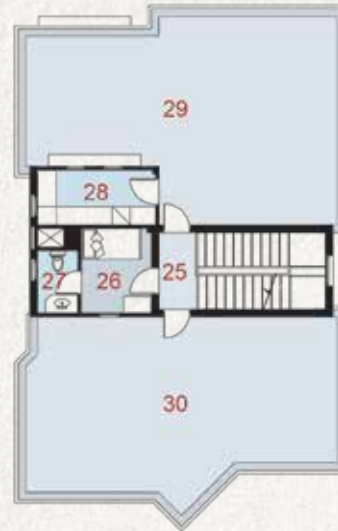
Average Plot Area
446 m²

Footprint
165 m²

BUA
529 m²

Average Garden
281 m²

Pool Area
28 m²



NO	Location	Dimensions
25	Lobby	2.75m x 1.35m
26	Maids Room	2.95m x 2.50m
27	Maids Toilet	2.30m x 1.65m
28	Laundry	4.20m x 2.00m
29	Back Terrace	10.75m x 7.15m
30	Front Terrace	10.85m x 7.00m

NO	Location	Dimensions
13	Corridor	7.00m x 1.45m
14	Living	6.55m x 6.20m
15	Terrace	2.60m x 1.25m
16	Bedroom	5.15m x 4.50m
17	Bedroom	4.75m x 4.65m
18	Terrace	6.20m x 2.55m
19	Terrace	3.00m x 0.65m
20	Master Bedroom	4.55m x 4.50m
21	Master Lobby	2.65m x 1.25m
22	Master Bathroom	2.80m x 2.00m
23	Bathroom	2.55m x 2.35m
24	Washbasin	1.95m x 1.60m

NO	Location	Dimensions
1	Entrance	2.60m x 2.10m
2	Reception	6.90m x 6.20m
3	Dining	5.15m x 4.50m
4	Corridor	6.90m x 1.45m
5	Washbasin	1.95m x 1.55m
6	Guest Toilet	2.60m x 1.95m
7	Guest Bedroom Lobby	2.65m x 1.25m
8	Guest Bathroom	2.80m x 2.00m
9	Guest Room	4.50m x 4.05m
10	Terrace	7.25m x 2.55m
11	Kitchen	4.75m x 4.65m
12	Stair	4.50m x 2.75m

Roof
Area 182m²

First Floor
Area 182m²

Ground Floor
Area 165m²

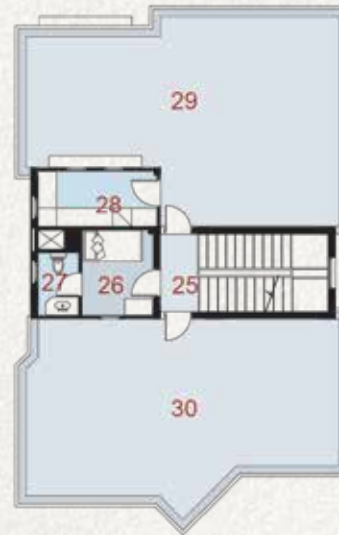
Average Plot Area
462 m²

Footprint
156 m²

BUA
500 m²

Average Garden
306 m²

Pool Area
28 m²



NO	Location	Dimensions
25	Lobby	3.00m x 1.40m
26	Maids Room	2.95m x 2.50m
27	Maids Toilet	2.30m x 1.65m
28	Laundry	4.20m x 2.00m
29	Back Terrace	10.65m x 7.10m
30	Front Terrace	10.25m x 6.25m

Roof
Area 172m²



NO	Location	Dimensions
13	Corridor	6.90m x 1.45m
14	Living	6.30m x 6.20m
15	Terrace	2.60m x 1.25m
16	Bedroom	4.55m x 4.10m
17	Bedroom	4.75m x 4.50m
18	Terrace	6.15m x 2.55m
19	Terrace	3.00m x 0.65m
20	Master Bedroom	4.55m x 4.50m
21	Master Lobby	2.65m x 1.30m
22	Master Bathroom	2.80m x 2.00m
23	Bathroom	2.55m x 2.35m
24	Washbasin	1.95m x 1.55m

First Floor
Area 172m²



NO	Location	Dimensions
1	Entrance	2.60m x 2.10m
2	Reception	6.30m x 6.20m
3	Dining	4.55m x 4.10m
4	Corridor	6.80m x 1.50m
5	Washbasin	2.00m x 1.55m
6	Guest Toilet	2.60m x 2.00m
7	Guest Bedroom Lobby	2.65m x 1.30m
8	Guest Bathroom	2.80m x 2.00m
9	Guest Room	4.50m x 4.05m
10	Terrace	7.25m x 2.55m
11	Kitchen	4.75m x 4.65m
12	Stair	4.50m x 2.75m

Ground Floor
Area 156m²



VILLA

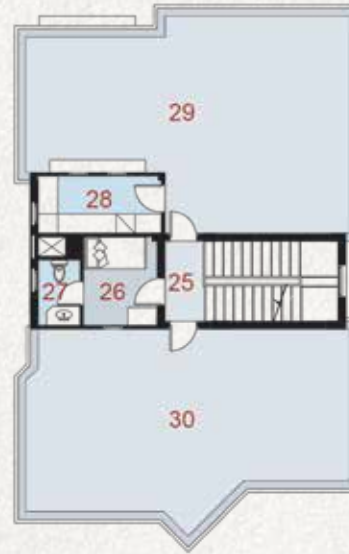
Average Plot Area
666 m²

Footprint
165 m²

BUA
529 m²

Average Garden
501 m²

Pool Area
35 m²



NO	Location	Dimensions
25	Lobby	2.75m x 1.35m
26	Maids Room	2.95m x 2.50m
27	Maids Toilet	2.30m x 1.65m
28	Laundry	4.20m x 2.00m
29	Back Terrace	10.75m x 7.15m
30	Front Terrace	10.85m x 7.00m

Roof
Area 182m²



NO	Location	Dimensions
13	Corridor	7.00m x 1.45m
14	Living	6.55m x 6.20m
15	Terrace	2.60m x 1.25m
16	Bedroom	5.15m x 4.50m
17	Bedroom	4.75m x 4.65m
18	Terrace	6.20m x 2.55m
19	Terrace	3.00m x 0.65m
20	Master Bedroom	4.55m x 4.50m
21	Master Lobby	2.65m x 1.25m
22	Master Bathroom	2.80m x 2.00m
23	Bathroom	2.55m x 2.35m
24	Washbasin	1.95m x 1.60m

First Floor
Area 182m²



NO	Location	Dimensions
1	Entrance	2.60m x 2.10m
2	Reception	6.90m x 6.20m
3	Dining	5.15m x 4.50m
4	Corridor	6.90m x 1.45m
5	Washbasin	1.95m x 1.55m
6	Guest Toilet	2.60m x 1.95m
7	Guest Bedroom Lobby	2.65m x 1.25m
8	Guest Bathroom	2.80m x 2.00m
9	Guest Room	4.50m x 4.05m
10	Terrace	7.25m x 2.55m
11	Kitchen	4.75m x 4.65m
12	Stair	4.50m x 2.75m

Ground Floor
Area 165m²

L

VILLA (L) LEFT

Plot Area
355 m2

Footprint
150 m2

BUA
480 m2

Garden
205 m2

Pool Area
28 m2



NO	Location	Dimensions
25	Lobby	3.00m x 1.70m
26	Maids Room	2.95m x 2.30m
27	Maids Toilet	2.30m x 1.65m
28	Laundry	3.10m x 2.00m
29	Back Terrace	10.30m x 6.55m
30	Front Terrace	10.30m x 5.90m

NO	Location	Dimensions
13	Corridor	6.75m x 1.45m
14	Living	6.45m x 6.10m
15	Terrace	2.60m x 1.25m
16	Bedroom	4.55m x 3.85m
17	Bedroom	4.40m x 4.15m
18	Terrace	5.40m x 2.55m
19	Terrace	3.00m x 0.65m
20	Master Bedroom	4.90m x 4.35m
21	Master Lobby	2.85m x 1.65m
22	Master Bathroom	2.75m x 2.00m
23	Bathroom	2.75m x 2.35m
24	Washbasin	1.55m x 1.80m

NO	Location	Dimensions
1	Entrance	2.60m x 2.10m
2	Reception	6.55m x 5.95m
3	Dining	4.55m x 3.75m
4	Corridor	6.65m x 1.45m
5	Washbasin	1.95m x 1.85m
6	Guest Toilet	2.50m x 1.95m
7	Guest Bedroom Lobby	2.85m x 1.65m
8	Guest Bathroom	2.75m x 2.00m
9	Guest Room	4.90m x 3.85m
10	Terrace	6.55m x 2.55m
11	Kitchen	4.40m x 4.15m
12	Stair	4.00m x 2.75m

Roof
Area 165m2

First Floor
Area 165m2

Ground Floor
Area 150m2

L



VILLA (L) RIGHT

Plot Area
355 m²

Footprint
150 m²

BUA
480 m²

Garden
205 m²

Pool Area
28 m²



NO	Location	Dimensions
25	Lobby	3.00m x 1.70m
26	Maids Room	2.95m x 2.30m
27	Maids Toilet	2.30m x 1.65m
28	Laundry	3.10m x 2.00m
29	Back Terrace	9.95m x 6.80m
30	Front Terrace	9.95m x 6.25m

Roof
Area 165m²



NO	Location	Dimensions
13	Corridor	6.75m x 1.45m
14	Living	6.30m x 6.10m
15	Terrace	2.60m x 1.25m
16	Bedroom	4.55m x 3.85m
17	Bedroom	4.40m x 4.15m
18	Terrace	5.40m x 2.55m
19	Terrace	3.00m x 0.65m
20	Master Bedroom	4.55m x 4.35m
21	Master Lobby	2.85m x 1.25m
22	Master Bathroom	2.75m x 2.00m
23	Bathroom	2.50m x 2.35m
24	Washbasin	1.95m x 1.60m

First Floor
Area 165m²



NO	Location	Dimensions
1	Entrance	2.60m x 2.10m
2	Reception	6.30m x 6.20m
3	Dining	4.55m x 3.75m
4	Corridor	6.65m x 1.45m
5	Washbasin	1.95m x 1.45m
6	Guest Toilet	2.50m x 1.95m
7	Guest Bedroom Lobby	2.85m x 1.25m
8	Guest Bathroom	2.80m x 2.00m
9	Guest Room	4.55m x 3.85m
10	Terrace	6.55m x 2.55m
11	Kitchen	4.40m x 4.15m
12	Stair	4.00m x 2.75m

Ground Floor
Area 150m²



Partners of Success



Salah ElSharkawy
DESIGNS
INTERIORS - ARCHITECT

SALAH ELSHARKAWY DESIGNS

With more than twenty five years of experiences in designing and executing palaces and hotels in Egypt, Oman, Turkey and Spain



MOHARRAM BAKHOUM

ACE is one of the oldest, largest and most experienced disciplinary engineering consultancy companies currently operating world wide, (city stars retail Centre, Manshiyyat Nasser Residential Complex, Grand Hyatt Hotel, Rod Elfarag Bridge)



ÖKOPLAN

ÖKOPLAN is a full-service engineering consultancy firm established in Cairo, Egypt in 1993 (Al-Alamein district 700 Faddan-2018/ Lake View-2017 / oil village-LIBYATelal Al-Sokhna-2007.)



NATURE
FOR
ENGINEERING CONSULTANCY

Nature For Engineering Consultancy

Nature is a multi-discipline Design & Engineering Consultancy Firm , Established in 2000 . Porto October – Marina Heights – Palm Hills (The Crown) – Sodic (Villette) – Alex West) .



EMAK SWIMMING POOLS

Emak Swimming Pools, is a part of Al-Kharafi Group international.(Novotel Marsa Allam-Marassi-Port Ghaleb-Makkadi Bay-Amwaj North Coast



KEM Consultant

Electromechanical consultant engineering Firm Established in 1995.(Hyde Park-new Cairo/ Crystal Asfour Hospital/Mall of Oman



GLOBALX

GlobalX is a specialized contractor



Al Moltaka Al Araby District, Villa 123, Sheraton Al Matar, Heliopolis, Cairo, Egypt

Call us
19835
www.laverde-eg.com